

2024

Accommodation Guide

He Arataki Nohonga





Arcady Hall



Tupuānuku



College House



Kirkwood Avenue Hall

2,700+ BEDS

A range of accommodation options are offered, from single fully-furnished rooms to self-contained studio units

Ngā Kai o Roto | Contents

Overview

- 2 Halls of residence
- 4 Pastoral care

Te tau tuatahi First-year options

- 6 Arcady Hall
- 8 College House
- 10 Ilam Student Accommodation
- 12 Kirkwood Avenue Hall
- 14 Rochester and Rutherford Hall
- 16 Tupuānuku
- 18 University Hall
- 20 How do I apply – first-year student
- 22 Compare first-year options

Ngā tau ki mua Beyond first year

- 24 Hayashi
- 25 Ilam Student Accommodation
- 26 Sonoda Christchurch Campus
- 27 Compare options beyond first year
- 28 How do I apply – second-year or returning student

Rainbow Diversity Support



UC aims to provide a welcoming and inclusive environment in all halls of residence and recognises that belonging is important for everyone.

Kōwhiringa anō Other options

- 30 International students
- 31 Couples and families
- 32 Homestay
- 33 Renting privately
- 34 How can I finance my stay?
- 35 Whakapā mai | Contact us
- 36 UC campus map

UC is proud to partner with Ngāi Tūāhuriri and Ngāi Tahu to uphold the mana and aspirations of mana whenua.

Front cover: Ngā Kete o te Wānanga; a woven design depicting the fibres of the baskets of knowledge. Represents partnership, community, and collaboration.

Published Mei | May 2023. All costs are stated in New Zealand Aotearoa dollars. Information is correct as at the time of publication but is subject to change. Please refer to the website for any updates.

Kia ora

Nau mai ki te Arataki Nohonga. Welcome to the Accommodation Guide.

We are so glad you chose to become a part of Te Whare Wānanga o Waitaha | University of Canterbury (UC) whānau, and we look forward to welcoming you.

There is a wide range of accommodation options available for UC students, both on and off campus. To help you decide which is right for you, this guide provides an overview of each of them.

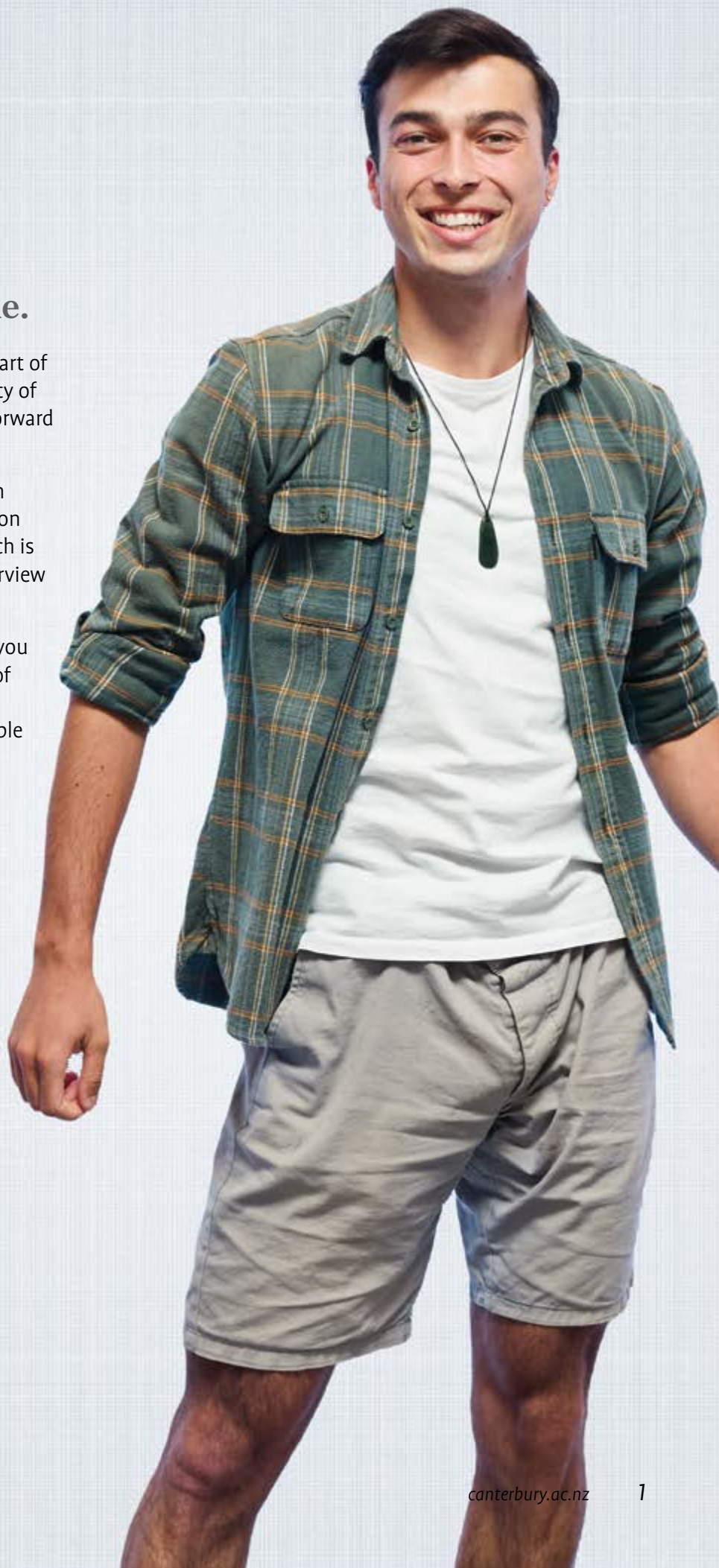
No matter which accommodation type you choose, you will meet a wonderful mix of people and find heaps of opportunities, new experiences, friendships, and valuable life lessons that will help you grow and succeed in the future.

UC's values of whanaungatanga, manaakitanga, and tiakitanga are lived out in our accommodation options, meaning we focus on the importance of valuing, empowering, and caring for each other, and the place we live and study. You will find a supportive, nurturing environment here.

‘UC has become a home for me. In my first week I made friends who I still see daily.’

Rohan

Bachelor of Engineering with Honours
in Mechatronics





Tupuānuku



Sonoda Christchurch Campus



WELLBEING

All accommodation options offer a close, supportive community to help you reach your full academic potential

Halls of residence

Living in a hall of residence offers outstanding accommodation options right on campus.

UC Accommodation

UC Accommodation partners with four specialised accommodation providers who manage and operate UC affiliated halls of residence. This includes all aspects of your residential life experience and contractual arrangements (see **page 4**).

Find your place

Many UC students recall their time in the halls as the time of their lives. Halls offer safe and comfortable accommodation for all students, from first-year to postgraduate level.

The halls of residence provide:

- a diverse student community
- manaakitanga – a supportive living, learning, and study environment
- 2,700 beds
- a homebase a few minutes' walk to lectures.

Your home away from home

Each hall offers:

- Taurima/Residential Assistant support
- your own fully-furnished room
- heating and power
- computer rooms with printing facilities
- unlimited wi-fi for UC students
- recreational facilities
- study areas
- events and social activities
- academic support for first-year students
- meals provided, or the facilities to enable you to cook for yourself
- laundry facilities
- bicycle storage
- carparking (except Hayashi, Kirkwood Avenue Hall, Tupuānuku).

Read more about each of the accommodation options on **pages 6–26**.



‘Uni accommodation helps you make your experience at UC exponentially better.’

Deepthica

Bachelor of Commerce in Taxation and Accounting



University Hall

Support to succeed

You can get off to a great start in your studies by staying in our halls of residence.

- First-year students are offered tutorials to help you succeed in your studies. Tutors are university students who have excelled at the same course.
- Study groups, mentoring, and peer support are facilitated by the halls of residence.
- Pastoral care is available to support your health and wellbeing.

An active lifestyle

Support your oranga wellbeing by staying active. Students get free RecCentre membership and the gym is conveniently located on campus. Here, you can play social sport, work out, or join a fitness class. The campus has stunning grounds for an uplifting walk as well.

Staying in halls of residence also brings you closer to over 160 UC clubs, with a wide variety of sporting, recreational, academic, and cultural groups.

Venture a little further afield for mountain biking, surfing, skiing, and tramping opportunities, with ski fields 1.5 hours' drive from the city, and surfing or mountain biking just 30 minutes' drive.

Flat with your friends on campus

You can stay in the halls of residence for the duration of your degree and postgraduate study too. Modern fully furnished, self-catered apartments offer a natural progression from a first year fully-catered hall to more independence and the convenience of living in a vibrant student community. For how to apply for an apartment, see **page 28**.

He paenga, he nohonga Tupeka Kore, Auahi Kore a UC.

The UC campus, including all halls of residence, is smokefree and vape-free.



EXPLORE

All accommodation options are within easy reach of spectacular outdoor adventure spaces

Rochester and Rutherford Hall



AT A GLANCE

5–15 minutes' walk from room to lectures

9 accommodation options

2,000+ beds for first-year students

 **Take a tour**

Take a look inside — view our videos and 360 degree panoramas online

You can virtually step inside rooms and facilities to have a closer look at accommodation options online.

canterbury.ac.nz/life/accommodation/halls/360-panoramas

Pastoral care

The University of Canterbury is committed to supporting the wellbeing and safety of our students.

Along with other tertiary education providers in New Zealand, the University must ensure that it is compliant with all requirements within the Education (Pastoral Care of Tertiary and International Learners) Code of Practice 2021.

nzqa.govt.nz/providers-partners/tertiary-and-international-learners-code

The code came into effect on 1 January 2022 replacing the previous International Code and Interim Domestic Code.

Code outcomes 5–7 ensures that student accommodation promotes and fosters a supportive and inclusive community which supports the wellbeing and safety of residents.

Code of conduct

Hall residents are expected to help support the safety and wellbeing of their hall communities, by engaging with health and learning resources, upholding diversity and inclusiveness, and looking out for fellow residents. Each hall is equipped with a regulations handbook to guide students in their responsibilities as residents. The University Student Code of Conduct also requires each student to take responsibility to keep themselves and others safe and not bring UC into disrepute.

canterbury.ac.nz/support/concerns/students/student-code-of-conduct

Keep yourself healthy

To ensure your health and wellbeing, we strongly recommend registering with the UC Health Centre on arrival. The meningitis vaccine is free to domestic students under 25 living in halls of residence, and free counselling is accessible to most students.

canterbury.ac.nz/healthcentre

Taurima/Residential Assistants

All halls of residence employ Taurima or Residential Assistants to be the first point of contact for students, acting in a supportive role and referring any concerns to the appropriate hall of residence or UC support service, as required. Taurima Residential Assistants undertake a training programme through their hall of residence as well as sessions offered by UC including:

- responding to people in psychological distress
- sexual harm prevention and response
- privacy
- diversity and rainbow awareness
- drug and alcohol awareness
- pathways to UC support services
- de-escalation techniques to prevent physical harm
- bicultural awareness.

Support services

We value manaakitanga at UC. There are several points of contact at UC who provide ākonga students with practical guidance, advice, and support in dealing with issues and concerns they may face while studying and living at UC. These include:

- Te Pātaka | Student Services Hub
- Kaitoko (student advisors for all first-year students)
- Student Care
- UC Health Centre
- Kā Waimaero | Ngāi Tahu Centre
- Pacific Hub
- Ratonga Whaikaha | Equity and Disability Service
- Faculty Student Advisors
- UC Chaplaincy
- UCSA Advocacy and Welfare team.

Kaitoko provide academic, pastoral, and holistic support for first-year students to help them navigate UC and achieve their study goals. They have specialist areas of knowledge and can help with course changes, degree planning, and study pathways. Every first-year student will have their own dedicated Kaitoko to help with any aspect of their studies.

See [page 35](#) for contact details.

In addition, we offer:

Analytics for Course Engagement (ACE programme)

ACE is a dashboard platform that provides students and staff with an enhanced real-time view of engagement with learning systems and academic progress.

Dedicated UC resources are responsible for monitoring and escalating issues as they arise. This enables students who need more support to be identified and followed up quickly.

Taurikura | Thrive Orientation programme

We offer this induction programme to ease your transition to university. It will provide first-year students with key information about:

- timetables
- assessment processes
- online resources
- academic expectations.

Taurikura will also introduce you to the wide range of support services available and familiarise you with:

- the student code of conduct
- consent awareness
- belonging/inclusiveness
- alcohol/drugs/risks.

Our goal is to increase understanding and awareness for first-year students to support academic success, maximise wellbeing, and ensure they know how to access all relevant support services available.

Te tau tuatahi | First-year options





Arcady Hall is an independent hall of residence headed by a Board of Governors and affiliated to UC through a Memorandum of Understanding and Partner Agreement.

The Hall has 100+ years of history and was originally named after Bishop Julius, the second Anglican Bishop of Christchurch, moving to its current premises in 1974.

Arcady Hall

Arcady Hall is a fully-catered hall of residence for first-year ākonga students.



- 162 student rooms
- 7 Residential Assistants



- 7 minutes' walk to campus



- four residential buildings
- fully-furnished rooms including king single beds
- kitchenettes with microwave, fridge, and hot drink making facilities
- shared bathrooms on each floor
- alcohol-free floors available



- 3 meals a day, 7 days a week
- dining room includes self-service salad bar, refreshments, coffee machine, and toastie makers
- quad for outdoor dining
- suppers during study and exam weeks
- early/late meals and packed lunches available
- meals provided during term and semester breaks
- regular themed dinners, such as Mid-Winter Christmas and Japan Night



‘I came to Christchurch not knowing many people here, so I felt the halls were going to be my best bet on building true connections with people.’

Sophie

Bachelor of Science in Biochemistry, with minors in Psychology and Sport Science



- shared bathrooms
- bathroom: student ratio – Mabel Hendrie/Cranmer – 1:4, Oaks – 1:5, Nancy Sims – 2:9



- laundry with drying room and outside drying area
- bed linen provided and changed weekly
- bedrooms vacuumed weekly
- bathrooms and common areas cleaned six times per week



- study centre with computers and printer connected to UC network
- tutorial programme delivered throughout the academic year
- entrance scholarships for residents (currently to the value of \$2,000 each) for academic excellence, women and science, community service, and first-in-family
- Hall awards (currently \$200 each) for academic achievement, excellence in Arts and Music, and Arcady Hall community engagement



- common room with pool table, table tennis, foosball, sound system, piano, SKY TV, and PlayStation
- music room with piano and drum kit
- events like Awards Night, themed parties, and annual ball
- Hobby Lobby



- secure bicycle storage



- Cranmer and Oaks both have one accessible bathroom



- cameras operating in some common spaces/outdoor areas
- swipe access into all accommodation blocks



- rooms have electric or radiator heaters



- total 2023 fees: \$20,973.30
- residential fee: \$20,023.30
- deposit: \$950
- carparking: \$300 (subject to availability)
- 2023 contract: **14 February–24 hours after final UC commitment**
- accommodation includes fully-catered term and semester breaks
- 3 instalments: January/April/September



- your contract is directly with Arcady Hall with standards and expectations as set out in the Hall's handbook.

arcadyhall.org.nz/handbook

Professor Sonia Mazey, Principal
90 Waimairi Road, Ilam,
Ōtautahi Christchurch 8041
Waea: +64 3 364 2747
Īmēra: hello@arcadyhall.org.nz
arcadyhall.org.nz



College House

College House is an independent hall of residence headed by a Board of Governors, and affiliated to UC through a Memorandum of Understanding and Partner Agreement.

The College is the oldest university college in New Zealand founded in 1850. In 1957, College House became fully independent, moving to its current premises in 1966.

College House

College House is a fully-catered hall of residence for first-year ākonga students.



- 159 student rooms
- 6 Residential Assistants and 11 second-year pastoral care leaders



- 7 minutes' walk to campus



- 11 residential houses, each with at least one pastoral care leader
- fully-furnished 13m² rooms including long single beds
- kitchenettes with fridge and hot drink making facilities
- bathrooms on each floor
- most rooms North facing



- 3 meals a day, 7 days a week
- dining room includes two salad bars, microwaves, refreshments area, toasters, and toastie makers
- suppers during study week
- breakfast and frozen meals provided during term and semester breaks
- early and late meals and packed lunches available
- formal dining Monday–Wednesday during term time
- guest speakers
- annual ball and themed feast dinners once a term
- dining room features part of a collection of more than 100 artworks



‘Living in a Hall of Residence is fantastic; the socialising opportunities and catering options are unparalleled.’

Andrew

Ngāti Kahungunu Ki Wairarapa
Bachelor of Laws, and a Bachelor of Science in Physics with a minor in Te Reo Māori



- shared bathrooms
- bathroom: student ratio – 1:5



- laundry with drying room
- ski, surf, and snowboard storage
- bed linen provided and changed weekly
- common areas cleaned daily
- bedrooms serviced weekly



- three bay study centre with interactive screens
- computer suite and printer connected to UC network
- library with mezzanine floor
- tutorial programme
- around \$100,000 of scholarships awarded annually for residents



- ground floor accommodation with bathroom, kitchenette, dining room, common room, and study centre access



- common room with kitchen, gas fire, and AV system
- recreation centre with light and sound system for live performances and parties
- sports lounge with full-size slate billiard table, table tennis, smart tv, and couches
- chapel service held once a term
- basketball hoop, fitness equipment, and all-weather tennis court
- formal lounge with gas fire and baby grand piano
- annual sporting and cultural exchange with Selwyn College, Ōtepoti Dunedin
- strong alumni network



- secure bicycle storage and separate high-performance bicycle storage



- swipe card access and fully secure



- rooms have individual wall heaters or in-ceiling heating



- total 2023 fees: \$23,797
- residential fee: \$22,862
- deposit: \$935
- carparking: \$120 (subject to availability)
- 2023 contract:
12 February–24 hours after final UC commitment
- accommodation over term and semester breaks by arrangement
- 3 instalments:
January/May/September



- your contract is directly with College House with standards and expectations as set out in the Hall's handbook.
collegehouse.org.nz/house-rules

Richard Taylor, Principal
100 Waimairi Road, Ilam,
Ōtautahi Christchurch 8041
Waea: +64 3 364 2001
Imēra: office@collegehouse.org.nz
collegehouse.org.nz



UniLodge

Ilam Student Accommodation

Ilam Student Accommodation is operated by UniLodge through a contract and pastoral care collaboration with UC.

UniLodge provides student accommodation in 100+ locations in Aotearoa and Australia.

Ilam Student Accommodation

Ilam Student Accommodation offers a supportive cosmopolitan, independent first-year living environment.



- 847 student rooms (up to 50% first years)
- Taurima: student ratio – 1:25



- fully-catered at Tupuānuku (up to 200)
- optional meal plan (lunch and dinner) on site (minimum of 80)
- self-catered
- shared kitchens equipped with basic essentials (personal cutlery and crockery not provided, but can be purchased online)
- shared dining/living room



- 2 apartment types – Kōwhai and Hīnau
- 41 week contracts for first-year students
- fully-furnished rooms including king single beds
- Single gender, non-alcohol, and rainbow-friendly apartments available
- option to flat together with your friends.



- shared bathrooms
- bathroom: student ratio – Kōwhai 2:6, Hīnau 1:3, 2:4, 2:5



‘The option to have academic support from tutors and personal support from our Taurima is something I would not have had if I had chosen an alternative to living in a hall of residence.’

Isabella

Bachelor of Commerce in Marketing, and Strategy and Entrepreneurship



- 5 minutes' walk to campus
- central location surrounded by other first-year halls



- Kōwhai – in-flat washing machine and dryer
- Hīnau – on-site laundry room
- bed linen not provided, but can be purchased online
- weekly housekeeping service (excluding bedrooms)



- computer room and printer connected to UC network
- tutorials arranged in specific subjects according to need and prior to exams
- Kahikatea study room



- "Miro" common room with pool table, table tennis, study and chill out spaces, and SKY TV
- 100+ organised residential life events
- inter-UniLodge sports competitions
- outdoor gym and social spaces



- secure bicycle storage



- wheelchair accessible Kōwhai apartments



- swipe card access to building and key to bedroom
- 24-hour student support and emergency response
- internal and external CCTV



- panel or ceiling heaters in each bedroom and common areas



- total 2023 fees: \$10,822–18,612
- residential fee: \$9,922–\$17,712
- deposit: \$900
- carparking: \$500 (subject to availability)
- 2023 contract: **11 February–25 November** (41 weeks)
- accommodation includes term and semester breaks
- fees payable fortnightly, semesterly, or lump sum



- your contract is directly with UniLodge with standards and expectations as set out in the Hall's Aratohu Kainoho Resident Handbook.
unilodge.com.au/student-accommodation-christchurch/ilam-apartments/faq

Jacob Waitere, General Manager

Victoria Thornton, Kaitātai

Ilam Student Accommodation,
2 Homestead Lane, Upper Riccarton,
Ōtautahi Christchurch 8041

Waea: +64 3 595 2548

Īmēra: ilam@unilodge.co.nz

unilodge.com.au/student-accommodation-christchurch/ilam-apartments



UniLodge

Kirkwood Avenue Hall

Kirkwood Avenue Hall is operated by UniLodge through a contract and pastoral care collaboration with UC.

UniLodge provides student accommodation in 100+ locations in Aotearoa and Australia.

Kirkwood Avenue Hall

Kirkwood Avenue Hall is a boutique self-catered hall of residence for first-year ākonga students.



- 64 student rooms including 10 ensuite rooms
- 4 Taurima



- 2–5 minutes' walk to campus



- one residential building with all rooms on one level
- fully-furnished rooms and ensuite rooms including king single beds
- hand basin and mirror in each room



- shared kitchen equipped with essentials (personal cutlery and crockery not provided but can be purchased online)
- individual food storage and cold storage
- self-catered
- shared dining room



- shared bathrooms or limited ensuite rooms
- bathroom: student ratio – 1:4



‘The social aspect of living in a hall is an excellent way to meet new people and make friends.’

Liam

Bachelor of Commerce in Accounting and Management



- laundry
- bed linen not provided, but can be purchased online
- bathrooms and shared areas cleaned daily



- areas for quiet study
- computer room and printer connected to UC network
- dedicated first-year support programme to aid students in the first weeks of university and hall life
- tutorials arranged in specific subjects according to need and prior to exams



- multiple recreational spaces with foosball, pool table, table tennis, and SKY TV
- inter-UniLodge sports competitions
- 100+ organised residential life events
- hall vegetable garden
- located across from the UC RecCentre



- wheelchair accessible rooms



- swipe card access to building and key to bedroom
- 24-hour student support and emergency response
- internal and external CCTV



- panel heater in each bedroom



- total 2023 fees: \$11,068 (single), \$12,380 (single ensuite)
- residential fee: \$10,168 (single), \$11,480 (single ensuite)
- deposit: \$900
- carparking: limited available on site complemented by student permit parking on campus.
- 2023 contract: **11 February–25 November** (41 weeks)
- accommodation includes term and semester breaks
- fees payable fortnightly, semesterly, or lump sum



- your contract is directly with UniLodge with standards and expectations as set out in the Hall's Aratohu Kainoho Resident Handbook.
unilodge.com.au
/student-accommodation-christchurch/kirkwood/faq

Jacob Waitere, General Manager

Anthony Chalmers, Kaitātai

7 Kirkwood Avenue, Upper Riccarton,

Ōtautahi Christchurch 8041

Waea: +64 3 595 2481

Īmēra: kirkwood@unilodge.co.nz

unilodge.com.au/student-accommodation-christchurch/kirkwood



ROCHESTER & RUTHERFORD HALL

Rochester and Rutherford Hall is governed by an Executive Council and affiliated to UC through a Partner Agreement and pastoral care collaboration.

The Hall was founded in 1984 with the merger of Rochester Hall (1956) and Rutherford Hall (1951).

Rochester and Rutherford Hall

Rochester and Rutherford Hall is a fully-catered hall of residence for first-year ākonga students.



- 192 student rooms
- 6 Residential Tutors



- 2–5 minutes' walk to campus



- 3 residential buildings and 2 houses
- fully-furnished rooms including king single beds
- kitchenettes with microwave, fridge, and hot drink making facilities
- bathrooms on each floor
- guest rooms available for parents



- 3 meals a day, 7 days a week
- dining hall with servery, SKY TV, and grand piano
- suppers during study and exam weeks
- early and late meals, and packed lunches available (including frozen meals)
- Annual Ball and themed dinners held once a term
- purpose-built BBQ area and Tribute Garden



- shared bathrooms
- bathroom: student ratio – 1:4



‘Each hall has got a different culture, so choose one that fits you best and get involved as much as you can!’

Maddie

Bachelor of Engineering with Honours in Civil Engineering



- laundry
- bed linen provided and changed weekly
- bathrooms and common areas cleaned five times per week
- bedrooms cleaned fortnightly



- Yardley Study Centre, Reading room, and O'Dowd Study Room for quiet study and tutorials
- social study areas in recreation room and TV room
- computer room and printer connected to UC network
- tutorials and personal programmes organised for students on request
- scholarships awarded to residents based on academic success



- buildings and rooms accessible with security fobs
- carpark, house foyers, and administration block monitored by CCTV
- carpark accessed by electronic gate



- recreation room with pool table, table tennis, foosball, air hockey table, and SKY TV lounge area
- chapel in which a service is held at the beginning of the year
- music room with piano, bass guitar, drums, keyboard, and sound system for live performances and parties
- Wellness Week



- ground floor accommodation with bathroom, dining room, and study centre access



- rooms centrally heated with individually controlled radiators



- total 2023 fees: \$20,500
- residential fee: \$19,250
- deposit: \$1,500 (\$500 admin fee, \$500 contingency fee, and \$500 fees in advance)
- carparking: \$250 (subject to availability)
- 2023 contract:
15 February–24 hours after final UC commitment
- accommodation excludes term and semester breaks
- 3 instalments:
January/April/August



- your contract is directly with Rochester and Rutherford Hall with standards and expectations as set out in the Hall's handbook.
rochester-rutherford.org.nz/handbook

Jo Morrow, Principal
77 Ilam Road, Ilam,
Ōtautahi Christchurch 8041
Waea: +64 27 262 7311
Īmēra: principal@rochester-rutherford.org.nz
rochester-rutherford.org.nz/handbook



Tupuānuku is operated by UniLodge through a contract and pastoral care collaboration with UC.

UniLodge provides student accommodation in 100+ locations in Aotearoa and Australia.

Tupuānuku

Tupuānuku is a fully-catered hall of residence for first-year ākonga students.



- 375 standard rooms, 100 ensuite rooms, and 29 accessible rooms with ensuite
- 20 Taurima



- 19 meals a week (brunch at weekends)
- Masterchef-style shared kitchen
- shared dining space, Te Rahu, opening onto an internal courtyard
- catered dining room with servery



- 5 minutes' walk to campus



- fully-furnished rooms and ensuite rooms including king single beds
- kitchenettes on each floor
- shared bathrooms on each floor



- shared bathrooms or ensuite rooms
- bathroom: student ratio – 1:4



- laundry
- sheets provided and changed weekly



‘For my first year of university, I wanted to live somewhere which would allow me enough peace and quiet to study, yet a strong social environment to make friends and enjoy my first year.’

Riley

Bachelor of Commerce in Management with a minor in Business and Sustainability



- dedicated study spaces
- bookable meeting or group study rooms
- group study space on each floor
- tutorials arranged in specific subjects according to need and prior to exams



- fully accessible with lifts, ramps, and specifically designed kitchen space



- full CCTV coverage
- swipe card access to building and bedroom



- centrally heated



- total 2023 fees: \$19,614 (single), \$20,926 (single ensuite)
- residential fee: \$18,614 (single), \$19,926 (single ensuite)
- deposit: \$1,000
- carparking: student permit parking on campus
- 2023 contract: **11 February–25 November** (41 weeks)
- accommodation includes fully-catered term and semester breaks
- fees payable fortnightly, semesterly, or lump sum



- social space on each floor
- shared lounge
- media and music rooms
- games room with pool tables, table tennis, air hockey, and foosball
- internal courtyard
- inter-UniLodge sports competitions
- 100+ organised residential life events



- secure internal and external bicycle storage



- your contract is directly with UniLodge with standards and expectations as set out in the Hall's Aratohu Kainoho Resident handbook.
unilodge.com.au
/student-accommodation-christchurch/tupuanuku/faq

Jacob Waitere, General Manager

Daniel Thornton, Kaitātai

3 Homestead Lane, Upper Riccarton,

Ōtautahi Christchurch 8041

Waea: + 64 (0) 27 247 6977

Īmēra: Tupuanuku@unilodge.co.nz

unilodge.com.au/student-accommodation-christchurch/tupuanuku



UniLodge

University Hall

University Hall is operated by UniLodge through a contract and pastoral care collaboration with UC.

UniLodge provides student accommodation in 100+ locations in Aotearoa and Australia.

University Hall

University Hall is a fully-catered hall of residence that offers a range of living styles for first-year ākonga students.



- 533 student rooms
- 20 Taurima



- 2–5 minutes' walk to campus



- 16 apartments available and single occupancy rooms in West and East residential buildings
- 3 couple's self-contained flats (see [page 31](#))
- fully-furnished rooms including king single beds
- hand basin and mirror in most East rooms
- kitchenettes throughout residential areas
- Single gender, non-alcohol, and rainbow-friendly living environments available



- 19 meals a week (brunch at weekends)
- dining room includes self-service salad bar and refreshments area
- early and late meals and packed lunches available
- themed dinners



- shared bathrooms
- bathroom: student ratio – West 1:6, East 2:5, East flats 1:3



'I chose to live in halls of residence because it's such a great opportunity to meet new people and get involved in the university life. It's also right next to the Uni which is a bonus!'

Tahara-Jayne

Bachelor of Sport Coaching in Sports Leadership and Management, with a minor in Media and Communication



- laundry
- bed linen not provided, but can be purchased online
- shared bathrooms cleaned daily



- dedicated tutorial and study rooms
- computer room and printer connected to UC network
- dedicated first-year support programme designed to aid students in the first weeks of university and hall life
- tutorials arranged in specific subjects according to need and prior to exams



- common room with SKY TV
- on-site volleyball court and basketball hoop, and tennis courts nearby
- inter-UniLodge sports competitions
- 100+ organised residential life events



- secure bicycle storage



- wheelchair accessible flats



- swipe card access to buildings, and key to bedroom
- 24-hour student support and emergency response
- internal and external CCTV



- radiators in each room



- total 2023 fees: \$17,564–\$20,434
- residential fee: \$16,564–\$19,434
- deposit: \$1,000
- carparking: \$500 (subject to availability)
- 2023 contract: **11 February–25 November** (41 weeks)
- accommodation includes fully-catered term and semester breaks
- fees payable fortnightly, semesterly, or lump sum



- your contract is directly with UniLodge with standards and expectations as set out in the Hall's Aratohu Kainoho Resident handbook.
unilodge.com.au
/student-accommodation-christchurch/universityhall/faq

Jacob Waitere, General Manager

Evan Moran, Kaitātai

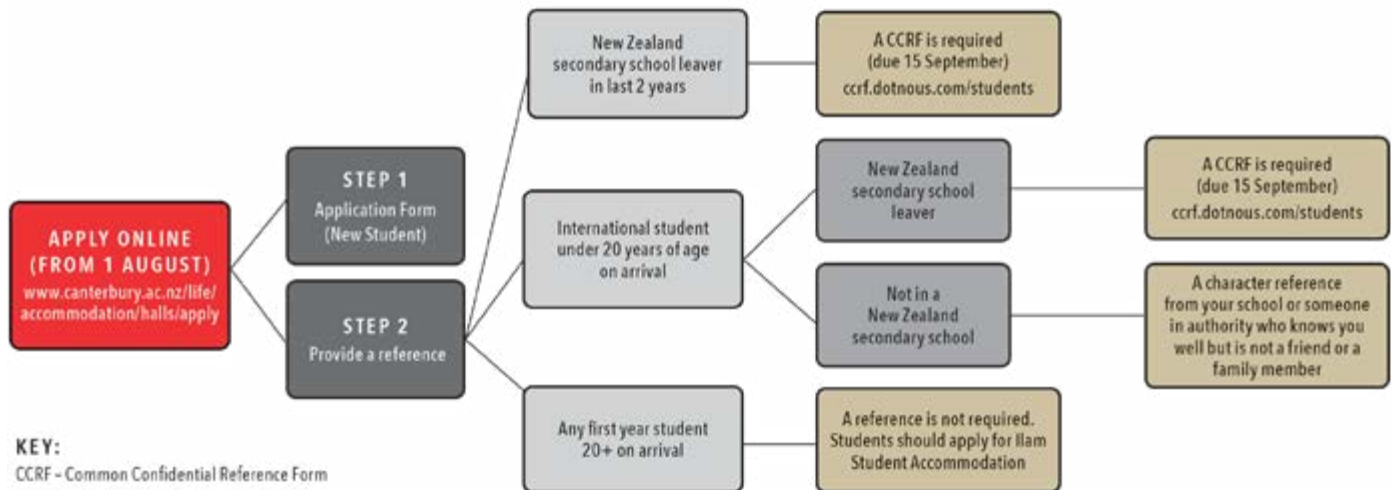
University Hall, 9 Maidstone Road, Ilam,
Ōtautahi Christchurch 8041

Waea: +64 3 595 2546

Īmēra: universityhall@unilodge.co.nz

unilodge.com.au/student-accommodation-christchurch/universityhall

How do I apply — first-year student



When applying as a first-year for a hall of residence, make sure you promote yourself well and send in the best application you can.

How to apply

Step 1 — apply online

Complete an online application form at canterbury.ac.nz/life/accommodation

As part of the form, you will need to select two preferred halls of residence and provide details for two emergency contacts.

A non-refundable processing fee of NZ\$100 is payable on completion of your application. This can be paid by credit/debit card or bank transfer. Exceptions are couples, and Manaaki NZ Scholarship recipients offered by the NZ Government – nzscholarships.govt.nz

Step 2 — provide a reference

- For Aotearoa school leavers or students who have taken a gap year, a Common Confidential Reference Form (CCRF) is required. You need to request this from your school by completing an online form. If we have a CCRF on file for you from the year before, please let us know.

- If you are not an Aotearoa school leaver, a character reference is required from someone in authority who knows you well but is not a friend or family member.
- If applying for College House, students are encouraged to contact the hall for an interview – collegehouse.org.nz
- First-year students over 20 on arrival are recommended to apply for Ilam Student Accommodation. No reference is required. Ilam can provide accommodation with other first-year students of similar age.

The application due date is **27 September**. This date is absolutely firm for all parts of your application, including payment of your application fee, and your CCRF.

Late applications will be considered on **25 October 2023** pending availability.

Tips for completing your application

- Do your research!** Take a tour, view 360 panoramas and videos online, and be confident in your choices. Remember, you will have a great experience in any hall of residence affiliated to UC.
- Apply early!** Giving your hall time to read and consider your application is in your best interest.
- Request your CCRF early** to enable your school to represent you well and submit your reference by **15 September**. References received after the due date result in a late application.

Take a tour

- Look around in person at Rā Tōmene | UC Open Day on **8 September 2023**. Register online at canterbury.ac.nz/openday
- Halls will also be open to view on **7 September** and **9 September 2023**. Times will be listed on the Rā Tōmene | UC Open Day webpage.
- Alternatively, accommodation tours can be booked online from **May to September** at canterbury.ac.nz/events/tours-and-events/campus-tours
- View our videos and 360 panoramas for rooms and facilities in halls at canterbury.ac.nz/life/accommodation/halls/360-panoramas

- Ensure you spell your name and date of birth correctly and in the same format for both your application and your CCRF request, as these are matched electronically.
- Check you are entering the correct term. First year students should apply for the “2024 Academic Year” and will be prioritised over **Semester 1** applications.

- Use a reliable email address that is not your school email address. The halls need to be able to communicate with you prior to your arrival, including connecting you with your Taurima or Residential Assistant as your first point of contact.
- All room types are considered individually. Applying for two room types within the same hall will not increase the likelihood of being offered a room in that hall.
- Kirkwood Avenue Hall and Tupuānuku both offer ensuite rooms, but there are fewer of these rooms and they are in high demand. Consider if you really need an ensuite room. Preference is given to students with medical, wellbeing, or other personal needs. If this is you, make sure you disclose these in your application form.
- Review the questions for the More About You section in our FAQs online. Complete these questions in a word document first, then copy and paste into your application. Include your involvements at school and in the community over the last two years.
- If you need to make changes to your application once it has been completed, contact Accommodation Services to make these for you – accommodation@canterbury.ac.nz. Following the application due date, preferences are not able to be changed.
- If you do not hear from us after applying online, contact us to make sure your application has been received. You should receive three emails from us – once you register your application, when the Declaration and Consent has been accepted, and when your CCRF has been received and your application forwarded to your preferred hall.
- Study Link or UC Scholarships are not able to be used for your hall deposit or first instalment. Deposits are due **24 October** and in 2023 ranged between \$900 and \$1,500. First instalments are due in **January**. Amounts differ between halls so know what the fees and payment schedules are before you apply online. Refer to our Comparison Charts online at canterbury.ac.nz/life/accommodation/halls

2023 Rā matua Key dates	
1 August	Online applications open for February 2024 start Residence fees for 2024 available online
15 September	Common Confidential Reference Form (CCRF) is due for Aotearoa secondary school leavers or gap year students
27 September	Applications due for accommodation starting in Semester 1
9 October	Offers made and waitlist activated
24 October	Due date for responses to offers (deposit required if accepting)
25 October	Late applications considered
Mid-December	Offers made to non-UC students, or Semester 1 only students (depending on availability)
1 May 2024	Applications due for accommodation starting in Semester 2

Selection process

All halls of residence will undertake a selection process. They will be looking to establish a diverse community with a mix of degree programmes and representation from all over Aotearoa and internationally. Prioritisation will apply for all rooms, which will take into consideration:

- UC scholarship recipients
- students studying degrees only offered at UC
- students whose home address is outside a reasonable commuting distance from UC
- students of younger age
- any specific personal circumstances.

If you do not receive an offer from your preferred halls, this does not mean you have not submitted a strong application. A number of considerations are taken into the selection process which you can discuss with the hall directly.

Offers will be made from **9 October 2023** and a General Waitlist will be held by Accommodation Services.

General waitlist

Any students unable to be offered a room may be offered an alternative hall with available rooms, or to be placed on the General Waitlist that all halls can access. Waitlisted students are updated on availability on a weekly basis.

A room in a hall is not guaranteed. If you receive an offer from the General Waitlist, consider it carefully as you may not receive another opportunity.

Please note: you are not able to receive an offer and stay on the General Waitlist at the same time.

The General Waitlist is not ranked, and any student can be offered depending on the type of resident the hall is looking for to complete their community and taking into consideration priority groups.

Summer accommodation

If you are undertaking a Certificate in University Preparation or Head Start, accommodation may be available on campus. Details will be provided online during **September** at canterbury.ac.nz/life/accommodation

Te Ratonga Nohonga Accommodation Services

Waea: +64 3 369 3569
 Īmēra: accommodation@canterbury.ac.nz
canterbury.ac.nz/life/accommodation/halls/apply

UC's Future Student Advisors are also happy to help with first-year queries or study planning:

Waea: 0800 VARSITY (827 748)
 Īmēra: liaison@canterbury.ac.nz

Compare first-year options

Services and suitability	Services		Suitability		
	Meals provided	Linen provided	Under 18 years of age international student	Single gender accommodation	Wheelchair accessible
Hall of Residence					
Arcady Hall	•	•	•	—	•
College House	•	•	•	—	•
Ilam Student Accommodation Hīnau: 3–5 bedroom apartments Kōwhai: 6 bedroom apartments	Fully-catered at Tupuānuku or optional meal plan on site for lunch and dinner	— —	— —	• •	— •
Kirkwood Avenue Hall (Self-catered)	—	—	—	—	•
Rochester and Rutherford Hall	•	•	•	—	•
Tupuānuku	•	•	•	—	•
University Hall	•	—	•	•	•

Contract length and cost	Contract			Costs in 2023 (NZ\$)			
	Contract length	One semester	Summer stay	Residential fee (power incl.)	Plus Deposit*	Annual carparking fee	Payment frequency
Hall of Residence							
Arcady Hall	Feb–Nov	—	—	\$20,023.30	\$950	\$300	Jan/Apr/Sept
College House	Feb–Nov**	—	—	\$22,862	\$935	\$120	Jan/May/Sept
Ilam Student Accommodation Hīnau: 3–5 bedroom apartments	41 weeks	•	•	\$9,922 self-catered	\$900	\$500	Fortnightly†
Kōwhai: 6 bedroom apartments	41 weeks	•	•	\$10,455 self-catered	\$900	\$500	Fortnightly†
Kirkwood Avenue Hall (Single)	41 weeks	•	—	\$10,168	\$900	—	Fortnightly†
Kirkwood Avenue Hall (Single Ensuite)	41 weeks	•	—	\$11,480	\$900	—	Fortnightly†
Rochester and Rutherford Hall	Feb–Nov**	—	Limited	\$19,250	\$1,500	\$250	Jan/Apr/Aug
Tupuānuku (Single)	41 weeks	•	•	\$18,614	\$1,000	—	Fortnightly†
Tupuānuku (Single Ensuite)	41 weeks	•	•	\$19,926	\$1,000	—	Fortnightly†
University Hall (West – Standard)	41 weeks	•	—	\$16,564	\$1,000	\$500	Fortnightly†
University Hall (East – Standard)	41 weeks	•	—	\$18,573	\$1,000	\$500	Fortnightly†
University Hall (East – Flats)	41 weeks	•	—	\$19,434	\$1,000	\$500	Fortnightly†

* Deposit consists of an administration fee, refundable contingency fee, and residents' association fee.

** Excluding term and semester breaks. Students can stay by arrangement with the head of hall.

† Fees payable fortnightly, semesterly, or lump sum.

Residence fees for 2024 are available online in **August 2023**.

If you are an international student under 18 years of age, you must stay either in a homestay (**see page 32**), in a fully-catered hall of residence, or with a designated caregiver until your 18th birthday.

For more information for international students, **see page 30**.

Ngā tau ki mua | Beyond first year





UniLodge

Hayashi

Hayashi is operated by UniLodge through a contract and pastoral care collaboration with UC.

UniLodge provides student accommodation in 100+ locations in Aotearoa and Australia.

Hayashi

Hayashi offers self-catered townhouses for ākonga students in their second year of study and beyond.



- 77 student rooms including six ensuite rooms and six accessible rooms
- 3 Taurima



- 15 minutes' walk to campus



- 16 two-storey townhouses including 10 couple's self-contained studios (see [page 31](#))
- fully-furnished rooms including king single or double beds
- Single gender, non-alcohol, and rainbow-friendly townhouses available



- bicycle stands



- shared kitchens equipped with essentials (personal cutlery and crockery not provided but can be purchased online)
- self-catered
- shared dining/living room



- shared bathrooms or limited ensuite rooms
- bathroom: student ratio – 1:2 or 2:5



- laundry
- bed linen not provided, but can be purchased online
- Light cleaning service weekly (excluding bedrooms)



- shared living room in each townhouse
- Residential life programme on offer, supporting social, academic, and wellbeing events



- key to individual townhouse and bedroom



- radiators in each room and common areas



- 48 or 52 week contracts
- your contract is directly with UniLodge with standards and expectations as set out in the Hall's Aratohu Kainoho Resident handbook.
unilodge.com.au/student-accommodation-christchurch/hayashi/faq

Jacob Waitere, General Manager
Antony Chalmers, Kaitātai
Hayashi, 32 Dovedale Avenue, Upper Riccarton, Ōtautahi Christchurch 8041
Waea: +64 3 595 2477
Īmēra: hayashi@unilodge.co.nz
unilodge.com.au/student-accommodation-christchurch/hayashi



UniLodge

Ilam Student Accommodation

Ilam Student Accommodation is operated by UniLodge through a contract and pastoral care collaboration with UC.

UniLodge provides student accommodation in 100+ locations in Aotearoa and Australia.

Ilam Student Accommodation

Self-catered apartments in an independent, cosmopolitan community from second year to postgraduate level.



- 847 student rooms (up to 50% second year+ or returners)
- Taurima: student ratio - 1:50



- 5 minutes' walk to campus



- 3 apartment types – Mānuka, Kōwhai, Hīnau
- fully-furnished rooms with single or king single beds
- Single gender, non-alcohol, and rainbow-friendly apartments available



- computer room and printer connected to UC network
- Kahikatea study room



- secure bicycle storage



- shared kitchens equipped with basic essentials
- self-catered
- optional meal plan (lunch and dinner) on site (minimum of 80)
- shared dining/living room



- bathroom: student ratio – Mānuka 1:6, Kōwhai 2:6, Hīnau 1:2, 1:3, 2:4, 2:5



- Mānuka and Kōwhai – in-flat washing machine and dryer, Hīnau – on-site laundry
- bed linen not provided, but can be purchased online
- Light cleaning service weekly (excluding bedrooms)



- common room with pool table, table tennis, and SKY TV
- 100+ organised residential life events



- swipe card access to building and key to bedroom
- 24-hour student support and emergency response
- internal and external CCTV



- panel or ceiling heaters in each bedroom and common areas



- 48 or 52 week contracts
- your contract is directly with UniLodge with standards and expectations as set out in the Hall's Aratohu Kainoho | Resident handbook. unilodge.com.au/student-accommodation-christchurch/ilam-apartments/faq

Jacob Waitere, General Manager

Victoria Thornton, Kaitātai

Ilam Student Accommodation,
2 Homestead Lane, Upper Riccarton,
Ōtautahi Christchurch 8041
Waea: +64 3 595 2548

Īmēra: ilam@unilodge.co.nz

unilodge.com.au/student-accommodation-christchurch/ilam-apartments



UniLodge

Sonoda

Sonoda is operated by UniLodge through a contract and pastoral care collaboration with UC.

UniLodge provides student accommodation in 100+ locations in Aotearoa and Australia.

Sonoda

Sonoda Christchurch Campus offers self-catered apartment-style living for ākongā students in their second year of study and beyond.



- 107 single student rooms
- 3 Taurima



- shared bathrooms
- bathroom: student ratio – 1:5



- 15 minutes' walk to campus



- 8 buildings of 22 5-bedroom apartments and 4 couple's self-contained flats (see [page 31](#))
- fully-furnished rooms including single beds, hand basin, and mirror
- single gender, non-alcohol, and rainbow-friendly apartments available
- meeting and event facilities
- option to flat together with your friends



- laundry in each building
- bed linen not provided, but can be purchased online
- bathrooms and shared areas cleaned once per fortnight



- computer room and printer connected to UC network



- common room with kitchen, pool table, table tennis, SKY TV, and DVD player
- Residential life programme supporting social, academic, and wellbeing events



- self-catered



- swipe card access to building and key to bedroom
- 24-hour student support and emergency response
- internal and external CCTV



- secure bicycle storage



- heated ceiling in bedroom and common areas



- 48 or 52 week contracts
- your contract is directly with UniLodge with standards and expectations as set out in the Hall's Aratohu Kainoho Resident handbook.
unilodge.com.au/student-accommodation-christchurch/sonoda/faq

Jacob Waitere, General Manager

Antony Chalmers, Kaitatai

Sonoda, 32 Dovedale Avenue, Upper Riccarton, Ōtautahi Christchurch 8041

Waea: +64 3 595 2477

Īmēra: sonoda@unilodge.co.nz

unilodge.com.au/student-accommodation-christchurch/sonoda

Compare options beyond first year

Services and suitability	Services			Suitability		
	Meals provided	Laundry included	Linen provided	Couples (see page 31)	Single gender	Wheelchair accessible
Hall of Residence						
Hayashi	—	•	—	•	•	•
Ilam Student Accommodation						
Hīnau: 2 bedroom apartments	Meal plan on site for lunch and dinner	•	—	—	•	—
Hīnau: 3–5 bedroom apartments	Meal plan on site for lunch and dinner	•	—	—	•	—
Kōwhai: 6 bedroom apartments	Meal plan on site for lunch and dinner	•	—	—	•	•
Mānuka: 6-bedroom apartments	Meal plan on site for lunch and dinner	•	—	—	•	—
Sonoda Christchurch Campus	—	•	—	•	•	•

Contract length and costs	Contract*			Costs in 2023 (NZ\$)				
	Contract length	One semester	Summer stay	Residential fee (power incl.)		Deposit [^]	Annual carparking fee	Payment frequency ^{^^}
Hall of Residence								
Hayashi	48 or 52 weeks	•	—	48	52	\$800	—	Fortnightly
King single room (bathroom 2:5)				\$12,240	\$12,584			
Double room (bathroom 2:5)				\$12,768	\$13,156			
King single room (bathroom 1:2) [#]				\$12,768	\$13,156			
Double room (bathroom 1:2)				\$13,248	\$13,624			
Double ensuite room (own bathroom)				\$13,776	\$14,196			
Ilam Student Accommodation	48 or 52 weeks	•	•	48	52	\$800	\$500	Fortnightly
Hīnau: 2 bedroom apartments				\$15,456	\$15,756			
Hīnau: 3–5 bedroom apartments				\$11,616	\$11,700			
Kōwhai: 6 bedroom apartments				\$12,240	\$12,480			
Mānuka: 6 bedroom apartments				\$7,920	\$8,112			
Sonoda Christchurch Campus	48 or 52 weeks	•	—	48	52	\$800	\$500	Fortnightly
				\$11,088	\$11,440			

* Includes term/semester breaks.

[#] 6 accessible king single rooms available.

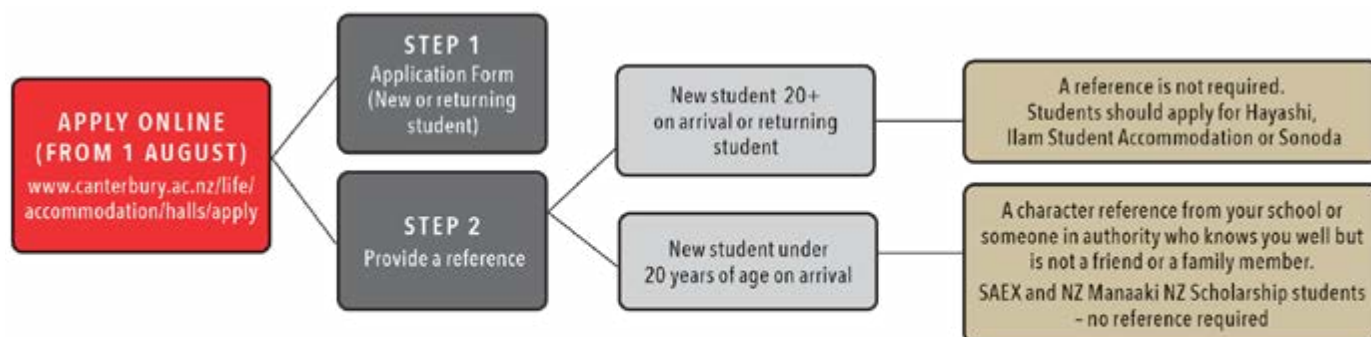
[^] Deposit consists of an administration fee, refundable contingency fee, and residents' association fee.

^{^^} Fees payable fortnightly, semesterly, or lump sum.

2023 contract lengths

- 16 January–18 December (48 weeks)
- 16 January–15 January 2024 (52 weeks)

How do I apply – second-year+ or returning student



KEY:

SAEX – Study Abroad Programme or Reciprocal Exchange
Manaaki NZ Scholarship – see nzscholarships.govt.nz

How to apply

New Student

Step 1 – apply online

Complete an online application form at canterbury.ac.nz/life/accommodation

If you are new to UC or lived in a hall of residence two or more years ago, you will need to complete an application as a “New Student”.

As part of the form, select two preferred halls of residence and provide details for two emergency contacts.

A non-refundable processing fee of NZ\$100 is payable on completion of your application. This can be paid by credit/debit card or bank transfer. Exceptions are couples, and Manaaki NZ Scholarship recipients offered by the NZ Government – nzscholarships.govt.nz

Step 2 – provide a reference

If you will be under the age of 20 on arrival, a character reference is required from someone in authority who knows you well but is not a friend or family member.

Returning Student

The most convenient option for second year accommodation is to apply as a returner to the same or another hall.

Hayashi, Ilam Student Accommodation, and Sonoda are the perfect solution for second year flatting. You can choose your flatmates or be allocated to an apartment with students of similar interests. Apartments

2023 Rā matua | Key dates

1 July	Online applications open for returning students. No application fee or reference is required
1 August	Online applications open for new students for a February 2024 start
27 September	Applications due for accommodation starting in Semester 1. This includes your character reference if under 20 on arrival
9 October	Offers made and waitlist activated
24 October	Due date for responses to offers (deposit required if accepting)
25 October	Late applications considered
1 December	Applications due for students on the Study Abroad or Exchange programme canterbury.ac.nz/study/study-abroad-and-exchange/study-abroad
1 May 2024	Applications due for accommodation starting in Semester 2

are fully furnished, power and internet are included, and you have more independence to cook for yourself. No flatting worries, power increases, flatmates leaving, or transport issues.

Tours will be offered to returning students in July. Check out our website for tour details or contact the halls directly.

If you are currently living in a UC affiliated hall of residence, you can login to the UC accommodation application portal and complete an application as a “Returning Student”. You are required to update your contact details, your level of study, course details, and add two preferred halls of residence.

Please note: Applications for the 2024 Academic Year will be prioritised over Semester 1 applications.

Waitlist

A room is not guaranteed. Any students unable to be offered a room may be offered an alternative apartment type or be waitlisted. The waitlist is not ranked, and any student can be offered depending on the mix of the students in the apartment with an available room.

Summer Accommodation

For students studying during the UC Summer programme (**November–February**), accommodation may be available on campus.

Details will be provided online during **September** at canterbury.ac.nz/life/accommodation



Kōwhiringa anō | Other options

International students

International students are welcomed and can find a ‘home away from home’ at one of UC’s accommodation options.

We value the diversity and knowledge that international students bring to our student community. With support services and staff on hand, we aim to make your transition to Aotearoa New Zealand life as easy as possible.

Code of Practice

The Education (Pastoral Care of Tertiary and International Learners) Code of Practice 2021 is designed to guide institutions in their practice and to protect international students when they study in Aotearoa. UC is a signatory to the Code and is required to meet the standards set by the New Zealand government. See **page 4** for more information on Pastoral Care at UC.

nzqa.govt.nz/providers-partners/tertiary-and-international-learners-code

canterbury.ac.nz/support/code

canterbury.ac.nz

[/life/accommodation/halls/pastoral-care](https://canterbury.ac.nz/life/accommodation/halls/pastoral-care)

Arrange accommodation early

To make your time at UC as stress-free as possible, we recommend that you arrange accommodation as soon as you have accepted your offer to study at UC.

Students under the age of 18

If you are an international student under 18 years of age on arrival you must stay in a UC approved homestay (see **page 32**), in a fully-catered, UC affiliated hall of residence, or with a designated caregiver until your 18th birthday.

canterbury.ac.nz/international/how-do-i-apply/international-students-under-18



UC International College (UCIC)

UCIC students can apply for the term “2024 UC International College” indicating a February, June, or October start. Please note accommodation will depend on availability, therefore, homestay may be required. Accommodation over the summer (**November–February**) can be arranged directly with the hall. Details will be provided online during September at canterbury.ac.nz/life/accommodation

Students under 18 years of age on arrival must apply for homestay (see **page 32**).

canterbury.ac.nz/life/accommodation/international/ucic

Study abroad or exchange students

Students studying at UC through an approved Study Abroad or Exchange programme can apply for an accommodation package at a UniLodge-managed hall of residence.

Accommodation is guaranteed for applications received by **1 December 2023** for Semester 1, or **1 May 2024** for Semester 2.

canterbury.ac.nz/life/accommodation/international/exchange

Arrival in Ōtautahi Christchurch

Ensure you have booked accommodation for when you first arrive in Ōtautahi – a hall of residence, homestay, temporary accommodation, or your own private arrangements. Check our website for up-to-date information on arranging transport to your confirmed accommodation.

canterbury.ac.nz/life/accommodation/international

Supportive community

UC is committed to ensuring our international students are well supported to be successful in their studies. From student mentors to one-to-one counselling, we will be alongside you every step of the way.

canterbury.ac.nz/support

Te Ratonga Nohonga Accommodation Services

Waea: +64 3 369 3569

Imēra: accommodation@canterbury.ac.nz

canterbury.ac.nz

[/life/accommodation/international](https://canterbury.ac.nz/life/accommodation/international)

Couples and families

UC has limited on-campus options for couples or families with a young child.

Self-contained studios or one bedroom units are offered at Hayashi, Kirkwood Flats, Sonoda Christchurch Campus, and University Hall. Please note these options are located within existing residential facilities with the exception of six 1-bedroom flats on Kirkwood Avenue.

Students with families are required to source a private rental property on arrival (see [page 33](#)). Please ensure you book childcare early, if required, as places are limited.

- **Hayashi** – 10 studios for couples in their second year of study and beyond
- **Kirkwood Flats** – 2 studios, 2 x 1-bedroom units, and 6 larger 1-bedroom flats
- **Sonoda Christchurch Campus** – 4 studios for couples in their second year of study and beyond
- **University Hall** – 3 x 1-bedroom units for couples

All self-contained units are for 52 week contracts.

How do I apply?

Complete an online application at canterbury.ac.nz/life/accommodation/halls/apply

Select your arrival level of study as a couple/family and the term “Couples/Family Accommodation”. You will be asked to select a room type rather than a location as accommodation is limited.

For private renting options, please refer to the Accommodation Services website.



Couples and family accommodation	Residential Fee (2023)	Deposit*
Hayashi (Couples only) Studio unit	\$17,732	\$800
Kirkwood Flats (Couples) Studio unit 1 bedroom unit 1 bedroom flat (can accommodate a young child)	\$15,132 \$15,756 \$14,976 + power charged monthly	\$600 \$600 \$600
Sonoda Christchurch Campus (Couples only) Studio unit	\$20,228	\$800
University Hall (Couples only) 1 bedroom unit	\$19,396	\$600

* The deposit consists of a \$300 administration fee, \$200 residential life fee (Hayashi/Sonoda only), and \$300 refundable contingency fee.

Te Ratonga Nohonga Accommodation Services

Waea: +64 3 369 3569
Īmēra: accommodation@canterbury.ac.nz
canterbury.ac.nz/life/accommodation/couples-and-families

Homestay



Homestays for students are available throughout Ōtautahi Christchurch, offering a wide range of living situations, from families with children, to single people living on their own.

Homestay means you live with an Aotearoa New Zealand family in their home and are treated as one of the family.

Homestays are suitable for individual students only.

International students under 18

We recommend all international students under the age of 18 on arrival apply for UC-approved homestay accommodation.

The Education (Pastoral Care of Tertiary and International Learners) Code of Practice 2021 is designed to guide institutions in their practice, and to protect international students when they study in Aotearoa. UC is a signatory to the Code and is required to meet the standards set by the Aotearoa government. See **pages 4 and 30**.

nzqa.govt.nz/providers-partners/tertiary-and-international-learners-code/canterbury.ac.nz/support/code/canterbury.ac.nz/life/accommodation/halls/pastoral-care

Homestay accommodation

UC has contracted International Student Care Ltd (ISC) to manage the homestay and placement process. ISC offer quality host families that have been through an extensive screening process to ensure that they are suitable to host UC students and are compliant with the requirements of the Education (Pastoral Care of Tertiary and International Learners) Code of Practice 2021.

The 2023 rate is \$300 per week, plus a one-off \$350 placement fee. The minimum stay is eight weeks.

ISC manages your payments and remains the key contact for you and your host for the duration of your stay in the home.

All applications for homestay are dependent on availability and must be received at least two weeks before you arrive in Christchurch.

Feedback from students

- 'What I enjoy most about the homestay experience is the fact that you experience normal life in New Zealand. Besides that, it is fun to live with Kiwi people, since it is very different to my student life in The Netherlands.'

Birgit van Huijgevoort, Research Assistant, Department of Mechanical Engineering

- 'I found it was a good choice for someone who comes from another country and doesn't know about the local culture. You can also get help in the house with things you are not familiar with. Your host parents will help you with everything you need. If you don't know something, they will give you advice.'

Carlos Gaona, Bachelor of Engineering with Honours in Civil Engineering

Te Ratonga Nohonga Accommodation Services

Waea: +64 3 369 3569

Īmēra: accommodation@canterbury.ac.nz
canterbury.ac.nz/life/accommodation/homestay-and-private-board

Renting privately



Renting privately (flatting) is a great option for students seeking more independence.

After your first year of study, you can either return to a hall of residence, choose to live on campus in a self-catered apartment (pages 24–26), or move into private rental accommodation.

A UC guide to flatting is available in print and online and covers a range of useful topics for students new to flatting. Tenancy Services also has a useful resource called 'Renting and You' available online at tenancy.govt.nz/assets/uploads/tenancy/renting-and-you-english-edition.pdf

How to find a property

Located in the established suburb of Ilam, UC is also close to adjoining suburbs such as Addington, Avonhead, Bryndwr, Burnside, Fendalton, Riccarton, Upper Riccarton.

Many other suburbs within Ōtautahi Christchurch have direct bus routes to campus. See metroinfo.co.nz for bus maps and timetables.

canterbury.ac.nz/life/accommodation/private

Costs

Rent can range from \$426 per week for a two-bedroom house to \$1,056 per week for a five plus-bedroom house.*

You will need to budget for set-up costs (including up to four weeks' rent as bond, one or two weeks' rent in advance, power and internet) plus weekly ongoing costs, contents and liability insurance, and personal expenses.

* Source: tenancy.govt.nz

Before you rent

Before signing a Residential Tenancy Agreement make sure you view the property in person, undertake a property inspection report with your landlord, and view an insulation statement.

A new tenant's checklist is a useful resource available online at tenancy.govt.nz/assets/uploads/tenancy/new-tenants-checklist.pdf

To give yourself time to find a suitable rental property, you should budget for and arrange temporary accommodation (backpackers or motel) for at least two weeks when you first arrive in Ōtautahi Christchurch.

canterbury.ac.nz/life/accommodation/temporary

Healthy homes standards

The healthy homes standards introduce specific and minimum standards for heating, insulation, ventilation, moisture and drainage, and draught stopping in rental properties.

If you are not sure if your rental property complies with the minimum standards, see tenancy.govt.nz/healthy-homes

Rights and responsibilities

With private renting comes rights and responsibilities you should be aware of. For information on this, and advice on any issues which may arise during your tenancy, you can contact Te Ratonga Nohonga | Accommodation Services or Tenancy Services, see tenancy.govt.nz

Te Ratonga Nohonga Accommodation Services

Waea: +64 3 369 3569
Īmēra: accommodation@canterbury.ac.nz
canterbury.ac.nz/life/accommodation/private

How can I finance my stay?

UC offers a number of scholarships to help pay for your accommodation, plus there are other options of financial assistance for students.

Scholarships

Helen Macmillan Brown bursaries

Up to six \$2,500 bursaries for female students who are residing or intending to reside in a hall of residence that is affiliated with UC during the tenure of the bursary (1 year). Applications due **15 August**.

canterbury.ac.nz/scholarships

Hall-specific scholarships

Arcady Hall, College House, and Rochester and Rutherford Hall all offer scholarships. A scholarship could be for a student applying for accommodation or a resident living on site. For further information, please view each hall's website. Applications are made directly to the hall.

canterbury.ac.nz/life/accommodation/halls

Other scholarships

Some scholarships can be used to contribute towards accommodation costs. For further information, search UC Scholarships on our website.

There may be further scholarships available through agencies such as:

- generosity.org.nz/giv-me
- teachnz.govt.nz/studying-to-be-a-teacher/scholarships
- universitiesnz.ac.nz/scholarships
- careers.govt.nz
- moneyhub.co.nz
- Manaaki Scholarship (offered by NZ Government for students from eligible countries nzscholarships.govt.nz).

Check with your school, careers advisor, or agent.



Hoto Akoranga | Study Link

If you are an Aotearoa citizen or have been living in New Zealand with a residence class visa for three years, you may be eligible for a Student Loan to help pay for your compulsory course fees, course-related costs, living costs; or a Student Allowance to help pay for your living costs.

studylink.govt.nz

A Student Loan or Allowance will not cover all your accommodation costs. For halls of residence, you will be required to pay your deposit and first instalment from your own savings. If you are an international student, you will not be eligible.

UCSA advocacy and welfare

Te Rōpū Ākonga | University of Canterbury Students' Association (UCSA) operates a Food Bank, a Food Support Service, the Mickle Fund, and offers Medical Prescription Grants and Hardship Grants in exceptional circumstances.

ucsa.org.nz

[/student-support/advocacy-welfare](https://ucsa.org.nz/student-support/advocacy-welfare)

Insurance

It is your responsibility to arrange contents insurance for your personal possessions, and to protect you from liability while you are living and studying away from home. Shop around and get quotes:

moneyhub.co.nz/contents-insurance.html

International students must also have medical and travel insurance that meets minimum requirements for the duration of study. Studentsafe University Insurance is UC's default insurance provider.

canterbury.ac.nz/international/how-do-i-enrol/prepare-for-your-move-to-nz/insurance

Karahipi | Scholarships

Waea: +64 3 369 4900

Īmēra: scholarships@canterbury.ac.nz

canterbury.ac.nz/get-started/scholarships

Whakapā mai | Contact us

Te Whare Wānanga o Waitaha University of Canterbury

T: +64 3 369 3999
Freephone in NZ: 0800 VARSITY (827 748)
E: AskUC Chat is available between
8am–5.15pm Monday–Friday
(except NZ public holidays).
canterbury.ac.nz

Te Ratonga Nohonga | Accommodation

canterbury.ac.nz/life/accommodation

Te Kaupeka Toi Tangata | Faculty of Arts

canterbury.ac.nz/arts

Te Kura Umanga | UC Business School

canterbury.ac.nz/business

Te Kaupeka Ako | Faculty of Education

canterbury.ac.nz/education

Te Kaupeka Pūhanga | Faculty of Engineering

canterbury.ac.nz/engineering

Te Kaupeka Oranga | Faculty of Health

canterbury.ac.nz/health

Te Kaupeka Ture | Faculty of Law

canterbury.ac.nz/law

Te Kaupeka Pūtaiao | Faculty of Science

canterbury.ac.nz/science



Useful UC links

Ākonga Māori
canterbury.ac.nz/support/akonga-maori

UCSA Advocacy and Welfare Team
ucsa.org.nz/student-support/advocacy-welfare

Te Rōpū Rapuara | UC Careers
canterbury.ac.nz/careers

UC Chaplains
canterbury.ac.nz/support/health/chaplains

Clubs and Societies
canterbury.ac.nz/life/studentlife/clubs

Code of Practice
canterbury.ac.nz/support/code

Enrol
canterbury.ac.nz/enrol

Equity and Diversity
canterbury.ac.nz/support/equity

Fees
canterbury.ac.nz/get-started/fees

Future Students
canterbury.ac.nz/future-students/contact-us

Whare Hauora | UC Health Centre
canterbury.ac.nz/healthcentre

Kā Waimaero | Ngāi Tahu Centre
canterbury.ac.nz/ntrc

UC Pasifika
canterbury.ac.nz/support/pasifika

Karahipi | Scholarships
canterbury.ac.nz/get-started/scholarships

Te Pātaka | Student Services Hub
canterbury.ac.nz/support/te-pataka

UC social media

 facebook.com/universitycanterbury

 instagram.com/ucnz

 twitter.com/ucnz

 snapchat.com/add/uc.nz

 youtube.com/UniversityCanterbury

 linkedin.com/school/university-of-canterbury

Proud supporters of



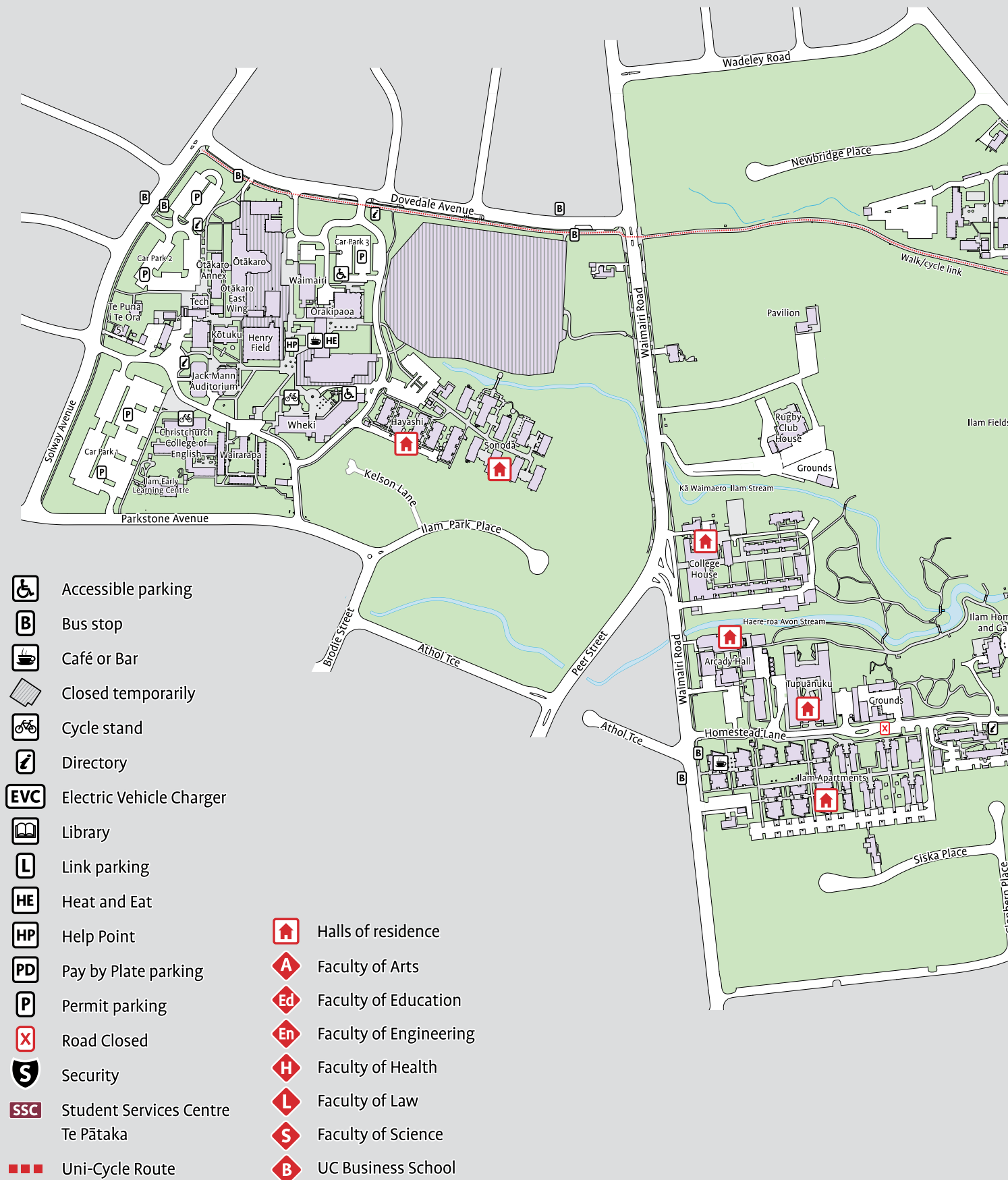
**UNIVERSITY OF
CANTERBURY
YOUNG NEW
ZEALANDER OF
THE YEAR**

**WORD
CHRISTCHURCH
FESTIVAL**



Our wellbeing hub has all the
information you need, in one place:
canterbury.ac.nz/support/wellbeing-hub

UC campus





**Smokefree
Campus**

Rā Tōmene Open Day

**Book your tour to explore the
hall options.**

Discover degrees and courses.

Experience our amazing campus.

8 September 2023
Book Now

**For more information, visit
canterbury.ac.nz/openday**



150 years
1873–2023